

STORM

By *Alco*

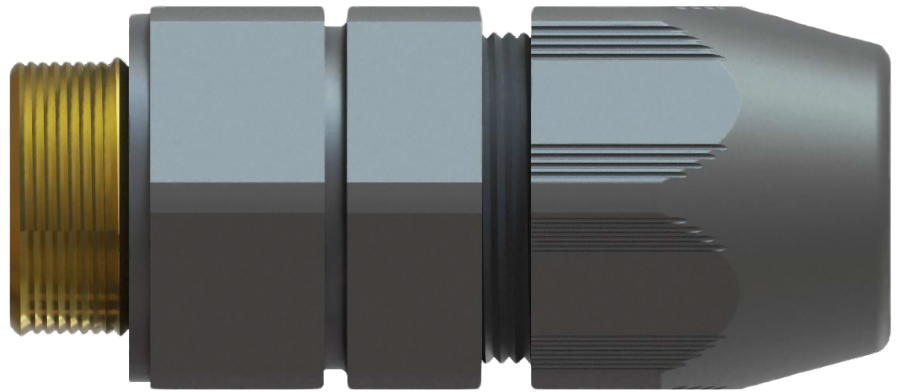
'Storm' Plastic Armoured Glands

Offering improved ingress protection (IP68) and faster fitting over conventional armoured cable glands, the economical STORM glands can be used from -20°C to 80°C.

The STORM range from Alco promises nothing less than a revolution in terminating armoured and braided cables.

FEATURES:

- Approved to IEC 62444
- Fast fit
- No shroud
- IP68 rated
- Corrosion resistant
- UV stabilised
- Zero halogen
- Comes with: Gland, locknuts and earth tag.



Part Number	Entry Thread Ø x L	Max. Diameter over bedding (mm)	Cable Diameter Range Min.-Max (mm)	Armour Wire Ø Min.-Max (mm)	Length Exposed SWA required Length (mm)	Anchorage	Impact	Tightening Torque	
								Cap	Sleeve
ALCAW20ZNC	M20 x 17	12	8.0-12.0	0.8-1.25	20.0 mm	Type D	Category 5	2.5 N.m	8 N.m
ALCAW20SBNC	M20 x 17	12	12.0-16.0	0.8-1.25	20.0 mm	Type D	Category 5	2.5 N.m	8 N.m
ALCAW20NC	M20 x 17	16	16-21.0	0.8-1.25	20.0 mm	Type D	Category 5	3 N.m	12 N.m
ALCAW25NC	M25 x 17	20.5	21.0-27.5	1.2-1.6	25.0 mm	Type D	Category 5	5 N.m	25 N.m
ALCAW32NC	M32 x 17	27.5	27.5-35.0	1.6-2	30.0 mm	Type D	Category 5	5 N.m	40 N.m
ALCAW40NC	M40 x 22	34	33.0-41.0	1.6-2	30.0 mm	Type C	Category 5	5 N.m	50 N.m
ALCAW50NC	M50 x 22	44	37.0-47.0	2-2.5	30.0 mm	Type C	Category 5	10 N.m	70 N.m
ALCAW50LNC	M50 x 22	44	45.0-53.0	2-2.5	30.0 mm	Type C	Category 5	10 N.m	70 N.m
ALCAW63NC	M63 x 22	57	50.0-60.0	2-2.5	30.0 mm	Type C	Category 5	10 N.m	100 N.m
ALCAW63LNC	M63 x 22	57	60.0-66.0	2-2.5	30.0mm	Type C	Category 5	10 N.m	100 N.m



Like us on Facebook

@Alco.cableglands



Follow us on Instagram

@alco_cableglands

**KLEIN
TOOLS**
AUSTRALIA



P: 1 300 300 747

www.wattmaster.com.au

STORM

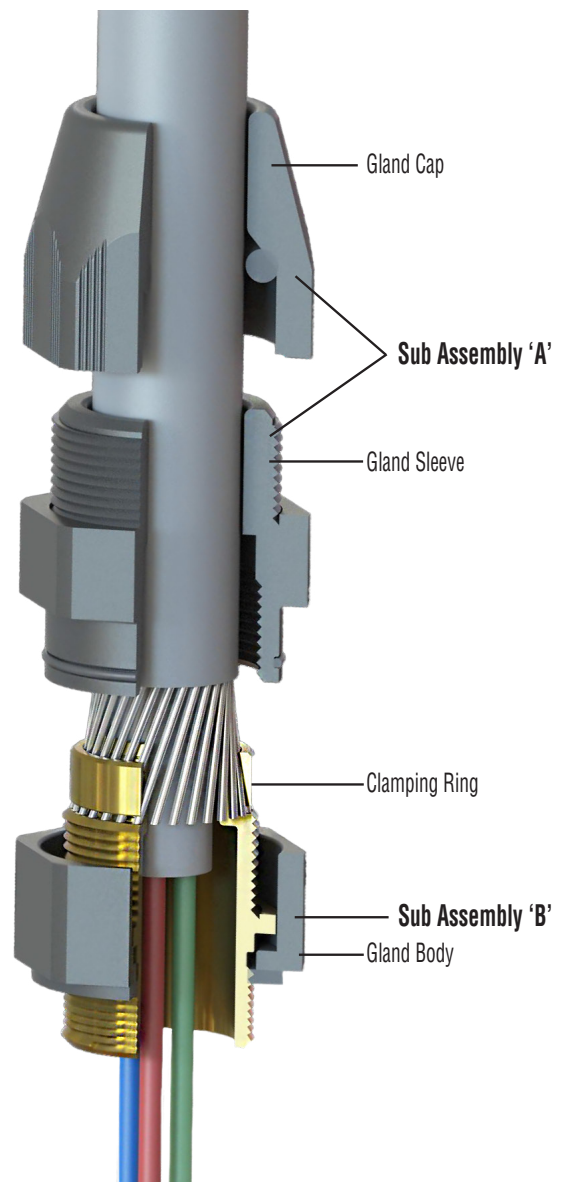
By *Alco*

'Storm' Plastic Armoured Glands

Assembly Instructions

Please read all instructions carefully before beginning the installation

1. Strip the cable outer sheath and armour/braid to suit the equipment.
2. Expose the armor/braid by stripping back the outer sheath; to the length specified in the table above.
3. Separate the gland into two sub-assemblies (A & B).
4. Secure the sub assembly B (Gland body) into the equipment.
5. Where plain entries are used, use washer, earth tag and locknut to secure connection to earth.
6. Pass the cable through sub-assembly A and the clamping ring.
7. Push the cable forward to keep the braid or armour in contact with the shoulder of the cone.
8. Position the clamping ring
9. Tighten the gland sleeve to gland body and tighten to the torque specified in the table.
10. Tighten the gland cap to the to the torque specified in the table.



Like us on Facebook

@Alco.cableglands



Follow us on Instagram

@alco_cableglands

KLEIN TOOLS
AUSTRALIA



P: 1 300 300 747

www.wattmaster.com.au