

Brass Plug for Hazardous Areas

- For indoor or outdoor use
- Provides seal on enclosure for unused entries
- Degree of protection against ingress of water IP66/68
- Compliance with IECEx CES 13.0022X
- Locknut is supplied as standard

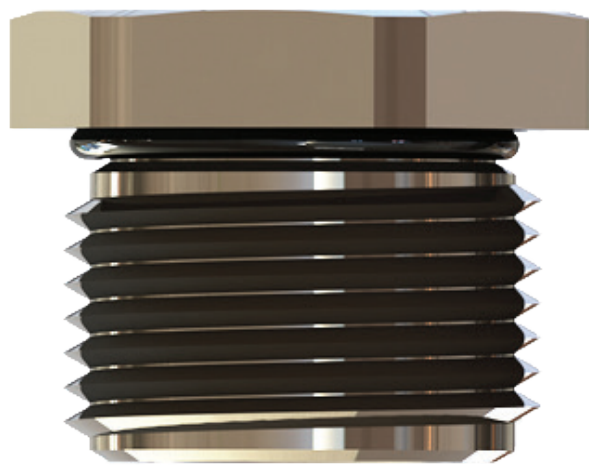
Protection types: Ex db IIC Gb, Ex eb IIC Gb, Ex tb IIIC Db, IP66/68

Standards: IEC/AS/NZS60079 (.0, .1, .7, .31), IEC/AS/NZS 60529

Material: Brass, Nickel Plated

Seal: Silicone

Temperature Range: -60°C/+130°C



Cat. No.	Thread Diameter x Length	Diameter		Plug Length	Torque - NM
		Across Flats	Across Points		
ALCBIMBPBM12	M12 x 15.5	17	18.9	21	N/A
ALCBIMBPBM16	M16 x 15.5	22	24	21	4 ±0,5
ALCBIMBPBM20	M20 x 15.5	25	27.5	21	5,5 ±0,5
ALCBIMBPBM25	M25 x 15.5	30	33	21	6 ±1
ALCBIMBPBM32	M32 x 15.5	37	41	21	6 ±1
ALCBIMBPBM40	M40 x 17.5	45	50	23	12 ±1,5
ALCBIMBPBM50	M50 x 17.5	55	61	23	18 ±2
ALCBIMBPBM63	M63 x 17.5	70	77	23	25 ±2,5

All dimensions in mm unless otherwise specified. Note: metric threads 1.5mm pitch, unless otherwise specified.