

# WHAT'S NEW



# TABLE OF CONTENTS



**KLEIN  
TOOLS**

PLIERS	4-5
STRIPPERS, CUTTERS & CRIMPERS	6-8
SCREWDRIVERS & NUT DRIVERS	9-11
KNIFES & CUTTING TOOLS	12
LEVELS & HEX KEYS	13-14
JOBSITE ACCESSORIES	15
TOOL BAGS & STORAGE	16-18
VOICE/DATA/VIDEO	19



CABLE GLANDS & ACCESSORIES	21-24
CONDUIT & ACCESSORIES	25
BATTERY & HYDRAULIC TOOLS	26-27
TERMINALS	28-29
LUGS & LINKS	30-32
FIXINGS & FASTENINGS	33
CABLE JOINTING	34-35



HAND TOOLS	37-38
------------	-------





Klein Tools was founded in 1857 by an industrious German immigrant, Mathias Klein, who began in the hand tool business when a broken side-cutting pliers was brought to his forge shop by a telegraph lineman. Mathias repaired the pliers by forging and finishing a new half for the tool and riveting it to the old half. Soon the lineman returned because the other original half of the pliers had broken and needed replacement. Mathias forged and finished the second half of the pliers and riveted it to the other replacement half – creating the first complete Klein pliers.

To this day, Klein Tools is proudly owned and managed by the Klein family. Over 160 years of hard work and dedication has earned Klein the reputation of supplying only the finest quality products for users of professional hand tools, Test and Measurement and occupational protective equipment.

## Long Nose Pliers

### Extra Slim Long Needle Nose Pliers

- Long, narrow nose and slim hinge for extremely close quarter work
- Finely knurled jaws grip thin wire without damaging it
- Hot-riveted joint for smooth action and no handle wobble
- Curved handles provide greater tool control
- Spring-loaded for self-opening action
- Forged steel for maximum durability



A-D335-51/2C

Cat. No.	Jaw Length	Jaw Capacity	Point Diameter	Handle Finish	Handle Color	Overall Length	Weight
A-D335-51/2C	4.3 cm	6.7 cm	1.58 mm	Plastic-Dipped	Light Blue	14.3 cm	0.059 kg

### Journeyman™ Pump Pliers

- Quick-Adjust rivet allows one-handed fast, easy adjustment of plier jaws
- Smoothly adjusts between six machined tongue and groove jaw positions
- Secure tongue and groove design for non-slip grip - even with heavy pressure
- Wide range of versatile jaw positions
- Tension-loaded joint to reduce handle wobble for sure gripping
- Dual material Journeyman™ handles for added comfort and durability



A-J502-10

Cat. No.	Jaw Width	Jaw Capacity	Handle Finish	Handle Color	Overall Length	Weight
A-J502-10	4.5 cm	4.5 cm	Journeyman	Yellow/Black	26 cm	0.5 kg

### Electronics Pliers with Pointed Nose

- Pliers with sharp, pointed nose for precise tip cutting and trimming of printed circuit boards
- Diagonal Cutters are spring-loaded for self-opening action
- Short jaws and beveled cutting edges permit close cutting of wire
- Induction-hardened cutting knives for long life
- Hot-riveted joint ensures smooth action and no handle wobble
- Plastic-dipped handles for comfort and ease of identification
- Custom, US-made tool steel



A-D209-4C

Cat. No.	Nose Type	Jaw Capacity	Cut Style	Handle Finish	Handle Color	Overall Length	Weight
A-D209-4C	Pointed	1.9 cm	Semi-Flush	Plastic-Dipped	Light Blue	10.8 cm	0.059 kg



## Cutting Pliers

### Journeyman™ Diagonal Cutting Pliers

- Diagonal Cutters with angled head design for easy work in confined spaces
- High-leverage pliers with rivet closer to the cutting edge for 36-percent greater cutting power than other plier designs
- Short jaws and beveled cutting edges permit close cutting of wire
- Induction-hardened cutting knives for long life
- Hot-riveted joint ensures smooth action and no handle wobble
- State-of-the-art, dual-material Journeyman™ handles provide a better grip without sacrificing tool strength and durability
- Hard, black material for toughness and durability
- Soft material on outer surface for comfort and a firm grip
- Color-coded handles allow quick identification of tool
- Custom, US-made tool steel



A-J248-8

Cat. No.	Nose Type	Jaw Width	Jaw Capacity	Handle Finish	Handle Color	Overall Length	Weight
A-J248-8	Angled	3 cm	1.9 cm	Journeyman	Red/Black	20.6 cm	0.227 kg

### Spring-Loaded Diagonal Cutting Pliers

- Pliers precisely cut injection mold sprues, gates, and other plastic
- Adjustable 2 mm hollow-head screw keeps knife-edges from damaging each other
- Spring-loaded for self-opening action
- Flush cutting knives
- Not designed for use on metal



A-D227-7C

Cat. No.	Joint Type	Jaw Capacity	Cut Style	Handle Finish	Handle Color	Overall Length	Weight
A-D227-7C	Adjustable	1.6 cm	Flush	Plastic-Dipped	Red	19.5 cm	0.249 kg

### Narrow Jaw, Diagonal Cutting Pliers

- Diagonal Cutting Pliers with tapered nose for easy working in confined areas and close tip cutting
- Pliers have short jaws and beveled cutting edges to permit close cutting of wire
- Induction-hardened semi-flush cutting knives for long life
- Hot-riveted joint ensures smooth action and no handle wobble
- Plastic-dipped handles for comfort and ease of identification
- Custom, US-made tool steel



A-D257-4

Cat. No.	Nose Type	Jaw Capacity	Cut Style	Handle Finish	Handle Color	Overall Length	Weight
A-D257-4	Tapered	1.9 cm	Semi-Flush	Plastic-Dipped	Light Blue	10.8 cm	0.054 kg

## Crimpers

### Crimping and Cutting Tool for Connectors

- Crimper crimps 10 to 22 AWG insulated and non-insulated terminals
- Cutting and Crimping Tool has specially hardened wire cutter in nose
- Tapered nose design for working in confined spaces
- Crimping die marked for insulated and non-insulated solderless terminals and connectors
- Plastic-dipped, cushioned handles for comfort



A-1005

Cat. No.	Cutting Capacity	Crimping Capacity	Handle Finish	Handle Color	Overall Length	Weight
A-1005	10-22 AWG	10-22 AWG	Plastic-Dipped	Red	24.8 cm	0.363 kg

## Strippers

### Wire Stripper and Cutter with Spring

- This wire stripper is compact and light, great for stripping insulation
- Stripper / Cutter cuts, strips and loops 12-26 AWG solid and stranded wire
- Spring-loaded action for self-opening
- Convenient hole for looping or bending wire
- Adjustable slide stop with set screw for repeat stripping work
- DO NOT use to cut steel wire or bolts



A-1004

Cat. No.	Strips and Cuts	Hold-Open Spring	Handle Color	Overall Length	Weight
A-1004	12-26 AWG Solid and 14-28 AWG Stranded	Yes	Yellow	12.7 cm	0.080 kg

### Wire Stripper and Cutter

- Cuts, strips, loops and bends 10-20 AWG solid and 12-22 AWG stranded wire
- Shear-type cutting for clean cuts
- Serrated nose jaws to bend, shape, or pull wire; holes for looping wire ends
- Spring-loaded for self-opening action
- Comfortable, plastic-covered handles



A-1011

Cat. No.	Strips and Cuts	Handle Color	Overall Length	Weight
A-1011	10-20 AWG Solid; 12-22 AWG Stranded	Blue	15.6 cm	0.104 kg



## Ratchet Cable Cutters

### Compact Ratcheting Cable Cutter

- High-leverage ratcheting mechanism cuts 500 mm<sup>2</sup> Al, 300 mm<sup>2</sup> Cu and up to 5.2 cm communications cable leaving no burrs or sharp edges
- One-handed use of the ratcheting cutter mechanism allows the other hand to position cable to ensure proper cut
- Compact design fits easily in a toolbox or bag
- Patented two-step ratchet mechanism requires fewer strokes per cut
- Quick release lever opens blades easily in every cutting position allowing for removal of the cable before completion of cut
- Precision ratcheting mechanism holds cable tight and allows rapid, straight cuts with minimum effort
- Hardened steel cutting blades for lasting strength and sharpness
- Plastic covered handles with hand guards for comfort and firm grip
- Locking lever keeps handles closed for easy transport
- One-year warranty



A-63601

Cat. No.	MCM Maximum Cable Capacity (Aluminum)	MCM Maximum Cable Capacity (Copper)	MCM Maximum Cable Capacity (Communication Cable)	Handle Color	Overall Length	Weight
A-63601	500 mm <sup>2</sup>	300 mm <sup>2</sup>	52.4 mm	Red	26 cm	1.2 kg

### Ratcheting Cable Cutter

- Reduced hand force for easier cutting
- Patented two-step ratchet mechanism requires fewer strokes per cut
- Cuts up to 500 mm<sup>2</sup> Copper and 500 mm<sup>2</sup> Aluminum
- Quick release lever opens blades easily in every cutting position, to allow removal of the cable before completion of cut
- Hardened steel cutting blades for lasting strength and sharpness
- Locking lever keeps handles closed for easy transport; fits in a tool box or bag
- For large diameter cables
- Cable Cutter Replacement Part List available for reference if needed
- Can be used on soft armoured cable up to 33mm diameter



A-63750

Cat. No.	MCM Maximum Cable Capacity (Aluminum)	MCM Maximum Cable Capacity (Copper)	MCM Maximum Cable Capacity (Communication Cable)	Handle Color	Overall Length	Weight
A-63750	500 mm <sup>2</sup> Frequent Use: 400 mm <sup>2</sup>	500 mm <sup>2</sup> Frequent Use: 400 mm <sup>2</sup>	52.4 mm	Red	30.8 cm	0.8 kg

### Open Jaw Ratcheting Cable Cutter

- Reduced hand force for easier cutting
- Patented two-step ratchet mechanism requires fewer strokes per cut
- Cuts up to 300 mm<sup>2</sup> Copper and 400 mm<sup>2</sup> Aluminum
- Quick release lever opens blades easily in every cutting position, to allow removal of the cable before completion of cut
- Hardened steel cutting blades for lasting strength and sharpness
- Locking lever keeps handles closed for easy transport; fits in a tool box or bag
- Front-loading jaws for tight applications
- Cable Cutter Replacement Part List available for reference if needed



A-63711

Cat. No.	MCM Maximum Cable Capacity (Aluminum)	MCM Maximum Cable Capacity (Copper)	MCM Maximum Cable Capacity (Communication Cable)	Handle Color	Overall Length	Weight
A-63711	400 mm <sup>2</sup>	300 mm <sup>2</sup>	28.6 mm	Red	29.2 cm	0.9 kg

## High Leverage Cable Cutters

### Journeyman™ High-Leverage Cable Cutter

- Cable Cutter cuts up to 4/0 aluminum AWG (no ACSR), 2/0 AWG soft copper and 100-pair 24 AWG communications cable
- High-leverage design for exceptional cutting capability
- Precision, one-hand shearing action
- Cable-gripping shear-type jaws
- Perfect for working in confined spaces
- Can be carried in most tools pouches
- State-of-the-art, dual material Journeyman™ handles provide a better grip without sacrificing tool strength or durability



A-J63050

Cat. No.	Cutting Capacity	Jaw Capacity	Handle Finish	Handle Color	Overall Length	Weight
A-J63050	4/0 Aluminum, 2/0 Soft Copper, 100-Pair 24 AWG Communications Cable	2.7 cm	Journeyman	Red/Black	24.3 cm	0.445 kg

## Cable Tie Tensioning Tools

### Nylon Tie Tensioning Tool

- Nylon Tensioning Tool tensions up to 29.5 kg
- Maximum tie width of 12.7 mm
- Designed for work with ties rated at 54 to 110 kg
- Handle grips for comfort
- Feed end of tie through tip of tool
- Tighten with tool handles and use lever to cut off excess tie material



A-86570

Cat. No.	Cable Tie	Cable Tie Size	Weight
A-86570	Nylon Tie	12.7 mm	0.395 kg

### Nylon Tie Tensioning Tool with Auto Cutoff

- Tensioning Tool automatically cuts off excess tie material
- Tensions up to 29.5 kg
- Maximum tie width of 12.7 mm
- Designed to work with ties rated at 54 to 110 kg
- Feed end of tie through tip of tool
- Tighten with tool handles, excess tie material is automatically cut off
- Increase tension by turning knob clockwise



A-86571

Cat. No.	Cable Tie	Cable Tie Size	Weight
A-86571	Nylon Tie	12.7 mm	0.5 kg



# SCREWDRIVERS & NUT DRIVERS

## VDE Insulated Tools (INS)



**Klein Insulated tools meet or exceed the IEC 60900 and ASTM F1505 standards, for insulated tools, and are clearly marked with the official 1000-volt rating symbol**

**Durable, molded insulation** to meet or exceed all VDE standards for insulated tools

**Anti-roll design** prevents tool loss

**Ergonomic handle grip** for greater torque and comfort

**Slimmer tips\*** for easier access to circuit breakers and other tight spaces.



**▲WARNING:** Only use tools that are marked with the official international 1000-volt rating symbol shown below, if there is any chance that the tools will make contact with an energized source.



**▲WARNING:** Wear approved eye protection. Always inspect your tools before use. Do not use if orange coating cracks, breaks or becomes damaged. Destroy tool if white layer shows through orange layer.

**▲WARNING:** Do NOT touch uninsulated portion of the tool or any conductive object when either might contact an energized source.

**▲WARNING:** Whenever possible, always de-energize lines and equipment prior to working on or around them. Klein insulated tools are designed only to reduce the chance of injury where the tool may make contact with an energized source.

**▲WARNING:** Because moisture, films, or other surface contaminants are conductive, Klein insulated tools must be kept clean, dry, and free of any surface contaminants.

## VDE Insulated Screwdrivers



32690INS



32690INS



32316INS



32317INS

32690-INS 4pc Insulated Screwdriver Set	
Cat. No.	Tip Type
32229INS	3.0 mm Cabinet Tip Screwdriver
32243INS	4.0 mm Cabinet Tip Screwdriver
32258INS	#1 Phillips Tip Screwdriver
32259INS	#2 Phillips Tip Screwdriver

32316-INS 6pc Insulated Screwdriver Set	
Cat. No.	Tip Type
32229INS	3.0 mm Cabinet Tip Screwdriver
32243INS	4.0 mm Cabinet Tip Screwdriver
32244INS	5.5 mm Cabinet Tip Screwdriver
32259INS	#2 Phillips Tip Screwdriver
32247INS	#2 Pozidriv® Tip Screwdriver
32319INS	#2 Square Drive Screwdriver

32317-INS 6pc Insulated Screwdriver Set	
Cat. No.	Tip Type
32229INS	3.0 mm Cabinet Tip Screwdriver
32243INS	4.0 mm Cabinet Tip Screwdriver
32244INS	5.5 mm Cabinet Tip Screwdriver
32245INS	6.5 mm Cabinet Tip Screwdriver
32258INS	#1 Phillips Tip Screwdriver
32259INS	#2 Phillips Tip Screwdriver

Cat. No.	Tip Type	Shank Type	Shank Length	Overall Length	Weight
32228INS	2.5 mm Cabinet Tip	Round	75 mm	180 mm	0.06 kg
32229INS	3.0 mm Cabinet Tip	Round	100 mm	180 mm	0.09 kg
32230INS	3.5 mm Cabinet Tip	Round	100 mm	190 mm	0.11 kg
32243INS	4.0 mm Cabinet Tip	Round	100 mm	190 mm	0.18 kg
32244INS	5.5 mm Cabinet Tip	Round	125 mm	225 mm	0.05 kg
32245INS	6.5 mm Cabinet Tip	Round	150 mm	260 mm	0.06 kg
32246INS	#1 Pozidriv®	Round	80 mm	180 mm	0.06 kg
32247INS	#2 Pozidriv®	Round	100 mm	210 mm	0.08 kg
32258INS	#1 Phillips Tip	Round	80 mm	180 mm	0.09 kg
32259INS	#2 Phillips Tip	Round	100 mm	210 mm	0.11 kg
32318-INS	#1 Square Drive	Round	80 mm	180 mm	0.05 kg
32319-INS	#2 Square Drive	Round	100 mm	210 mm	0.11 kg

## Cushion-Grip Screwdrivers

Meets or exceeds or exceeds applicable ASME / ANSI specifications

**Tip-Ident®** quickly identifies the type of screwdriver and tip orientation



**Cushion-Grip** handle allows for greater torque and comfort

**Heat-treated, premium chrome plated shank** for smooth feel and corrosion resistance

**Precision-machined** tip for exact fit

**Integral flanges** inside handle provide solid, twist-resistant blade anchor



## Cushion-Grip Screwdrivers

**Includes core Cushion-Grip screwdriver features plus:**

- Narrow cabinet-tip permits blade access where space is limited
- Precision machined combo-tip designed for combination head screws
- Precision machined Phillips tip provides a more consistent geometric symmetry than conventional Phillips screwdrivers to accurately fit and torque without slippage
- Heavy-duty square shank and hex bolster allows wrench-assisted turning
- Bolster reinforces shank for hard use



A-603-4-INS



A-602-6

Cat. No.	Tip Type	Shank Type	Insulated	Shank Length	Overall Length
A-601-4	4.8 mm Cabinet	Round	No	101.6 mm	196.9 mm
A-603-3	#1 Phillip	Round	No	76.2 mm	171.5 mm
A-603-4-INS	#2 Phillips	Round	Yes	101.6 mm	211.2 mm
A-603-6	#3 Phillips	Round	No	152.4 mm	279.4 mm
A-603-7	#2 Phillips	Round	No	177.8 mm	287.4 mm
Heavy-Duty					
A-605-8	6.4 mm Cabinet	Round	No	203.2 mm	313.5 mm
Heavy-Duty with Bolster					
A-600-12	12.7 mm Keystone	Square	No	304.8 mm	442.9 mm
A-612-4-INS	3.2 mm Cabinet	Round	Yes	101.6 mm	196.9 mm
Heavy-Duty with Hex Bolster					
A-602-3	5.6 mm Keystone	Round	No	76.2 mm	171.5 mm
A-602-4	6.4 mm Keystone	Round	No	101.6 mm	211.9 mm
A-602-6	7.9 mm Keystone	Round	No	152.4 mm	277.8 mm
A-602-8	9.52 mm Keystone	Round	No	203.2 mm	341.3 mm
A-602-10	9.52 mm Keystone	Round	No	254.0 mm	392.1 mm



## Colour-Coded Cushion Grip

### Includes core Cushion-Grip screwdriver features plus:

- Color-coded handle ends for quick and easy identification
- TORX® tip drive cuts slippage, saves fasteners and transmits more torque to the work



A-662-4-INS

Cat. No.	Tip Type	Shank Type	Insulated	Shank Length	Color Code	Overall Length
A-662-4-INS	#2 Square-Recess	Round	Yes	101.6 mm	Red	211.2 mm

## Demolition Screwdrivers and Sets

### Includes core Cushion-Grip screwdriver features plus:

- Engineered, manufactured and tested for prying, chiseling and punching
- Plated metal strike cap to protect handle from hammer blows
- Heat treated metal shaft runs complete length of handle to metal strike cap to transfer metal strike force



A-602-7DD

Cat. No.	Tip Type	Shank Type	Insulated	Shank Length	Color Code	Overall Length
A-602-7DD	#2 Square-Recess	Round	Yes	101.6 mm	Red	211.2 mm

## Multi-Bit Screwdriver/Nut Drivers

- Multi-Bit Screwdriver / Nut Driver with Cushion-Grip handle for greater torque and comfort
- End of handle is marked to quickly identify tool
- Features 8 mm and 6 mm nut drivers, #1 and #2 Phillips, 6 mm and 5 mm slotted, T10 and T15 TORX, and #1 and #2 square-recess
- The following replacement bits are available: Cat. No. 32482 (#1 Phillips and 5 mm Slotted), Cat. No. 32483 (#2 Phillips and 6 mm Slotted), Cat. No. 32484 (#1 Square & #2 Square), and Cat. No. 32485 (T10 Torx and T15 Torx)



A-32477

Cat. No.	Description	Nut Driver Sizes	Phillips Bits	Slotted Bits	Square Bits	TORX® Bits	Shank Length	Overall Length
A-32477	10-in-1	5/16", 1/4"	#1, #2	6.4 mm, 4.8 mm	#1, #2	T10, T15	101.6 mm	196.9 mm





## Carbon Steel Hawkbill Slitting Blade Pocket Knife

- Extra-large curved hawkbill slitting-blade 67 mm long
- Ideal for heavy-duty line work
- Woodgrain plastic handle
- Blade locks open



A-1550-4

Cat. No.	Lock Style	Blade Type	Blade Length	Blade Material	Handle Color	Handle Material	Length Closed	Overall Length	Weight
A-1550-4	Liner lock	Hawkbill	6.7 cm	Carbon Steel	Wood Grain	Plastic	10.5 cm	15.6 cm	0.113 kg

## Pocket-Sized Knife Sharpener

- A rugged, versatile sharpener featuring fine craftsmanship and unique design
- Sharpening rod unscrews and stores in handle for convenient carrying in tool box, pouch or pocket
- Sharpening rod is precision-cut, hard-chromed steel for accurate, consistent sharpening and long life
- Magnetized to trap metal particles when sharpening
- Handle is high-visibility orange color, with handy pocket clip



A-44151

Cat. No.	Blade Length	Blade Material	Color	Handle Length	Overall Width	Overall Length	Weight
A-44151	9.5 cm	Steel	High-Visibility Orange	14 cm	1.3 cm	24.1 cm	22.7 g



### 3 Vial Bubble Level

- Level's adjustable vial allows angle transfer between multiple surfaces
- Patented magnet track keeps powerful rare earth magnets in place
- Top V-Groove fits contour of conduit and pipe
- High visibility vials with reinforced housing
- Durable rubberized end caps increase drop protection at 3 m
- Vial accuracy is +/- 0.029°
- Rubber grip handle for easy transportation and use
- Orange body for visibility so it won't get lost on conduit
- Protrusions on rubber end caps help prevent movement while on walls
- Hang holes on each end for easy storage
- US Patent 9,964,407



A-935L

Cat. No.	Material	Accuracy	Type of Vials	Magnet Type	Drop Protection	Overall Length	Weight
A-935L	Aluminum	+/- 0.029°	0°, 90°, Adjustable	Rare Earth	3 m	61 cm	0.87kg

### Lighted Torpedo Billet Level

- Level's large, bright LED high-definition vials are easy to read in any lighting condition
- Patented magnet track prevents powerful Rare Earth magnets from falling out
- Large, easy-to-read high-visibility vials at 3 angles: level, 90, and 45 degrees
- Large top-view vial windows enable easy readability from multiple angles
- High-visibility orange professional-grade billet aluminum body is easy to see on conduit and at jobsite
- 3-minute auto shut-off saves battery life
- V-Groove fits contour of conduit and pipe
- Tapered nose easily pushes into pockets
- Water and impact resistant
- 2 x AAA batteries included
- US Patent 9,964,407



A-935RBLT

Cat. No.	Material	Accuracy	Magnet Type	Batteries	Included	Overall Length	Weight
A-935RBLT	Aluminum	+/- 0.029°	Rare Earth	2 x AAA	Batteries	61 cm	0.87kg

### Grip-It® Metric Five Key Ball Hex Set

- Handy sets fit your pocket or tool box easily and help eliminate the lost-key problem
- Tough, heat-treated alloy steel
- Hex-key ends are square-cut for a secure full-depth fit and maximum contact with the hex socket to prevent slippage and stripping of the socket
- Holder serves as a handle
- Two key positions (straight-out or right angle) for extra leverage
- Ball design allows for a thicker neck diameter increasing torque capacity while maintaining operational angles to 25-Percent
- Included:  
5mm Ball End Hex Key, 6mm Ball End Hex Key, 7mm Ball End Hex Key, 8mm Ball End Hex Key, 10mm Ball End Hex Key



A-70572

Cat. No.	Size	Material	Finish	Handle Length	Key Length	Overall Length	Weight
A-70572	5 mm, 6 mm, 7 mm, 8 mm, 10 mm	Alloy Steel/Nylon	Satin	11.3 cm	4.1 to 4.9 cm	11.2 cm	263 g

## Six-Key Metric Folding Hex Key Set

- Two key positions (straight-out or right angle) for extra leverage
- Hex ends are square-cut for a secure full-depth fit and maximum contact with the hex socket to prevent slippage and stripping of the socket
- Handy sets fit in your pocket or tool box easily and help eliminate the lost key problem
- Includes 6 hex key sizes: 3 mm, 4 mm, 5 mm, 6 mm, 8 mm and 10 mm



A-70580

Cat. No.	Handle Length	Key Length	Color	Weight
A-70580	13.7 cm	6 to 10.2 cm	Silver	386 g

## Eight-Key Imperial Folding Hex Key Set

- Two key positions (straight-out or right angle) for extra leverage
- Hex ends are square-cut for a secure full-depth fit and maximum contact with the hex socket to prevent slippage and stripping of the socket
- Handy sets fit in your pocket or tool box easily and help eliminate the lost key problem
- Includes 8 hex key sizes: 1/20", 1/16", 5/64", 3/32", 7/64", 1/8", 9/64" and 5/32"



A-70581

Cat. No.	Handle Length	Key Length	Finish	Weight
A-70581	7.8 cm	4.8 to 7.6 cm	Black Oxide	91 g

## Nine-Key Imperial Folding Hex Key Set

- Two key positions (straight-out or right angle) for extra leverage
- Hex ends are square-cut for a secure full-depth fit and maximum contact with the hex socket to prevent slippage and stripping of the socket
- Handy sets fit in your pocket or tool box easily and help eliminate the lost key problem
- Includes nine-key set sizes: 5/64-Inch, 3/32-Inch, 7/64-Inch, 1/8-Inch, 9/64-Inch, 5/32-Inch, 3/16-Inch, 7/32-Inch and 1/4-Inch



A-70591

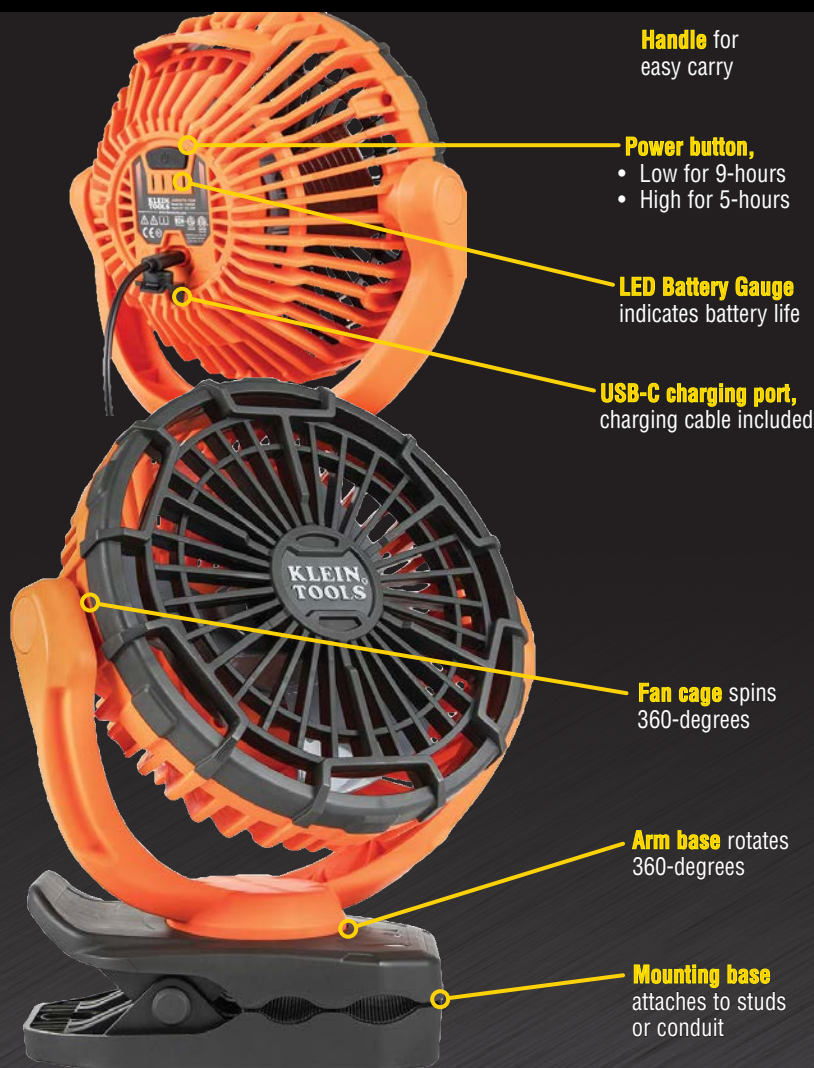
Cat. No.	Size	Material	Finish	Handle Length	Key Length	Overall Length	Weight
A-70591	5/64", 3/32", 7/64", 1/8", 9/64", 5/32", 3/16", 7/32", 1/4"	Alloy Steel/Nylon	Satin	11.1 cm	6.8 to 9.7 cm	14 cm	227 g



## RECHARGEABLE PERSONAL JOBSITE FAN

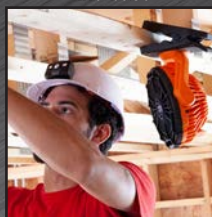
No more fans on the floor blowing dust and debris

Klein Tools' personal fan has multiple mounting options keeping the fan off the dirty job site floor. Whether you mount it or simply sit the fan on a flat surface, airflow can be aimed in any direction with a fan cage that both rotates and spins 360 degrees. At 26.7 cm tall, this fan is the ideal size to carry every day while producing powerful flow of air when it's hot and stuffy on the job.



- Personal fan has multiple mounting options perfect for the job site
- Arm base rotates and cage spins 360 degrees to aim airflow in any direction
- Incorporated into the base are two powerful magnets and a hang hole for mounting
- Base forms a strong clamp for attaching to studs or conduit
- Features two long-lasting fan modes: Low for 9 hours; High for 5 hours
- LED battery gauge indicates charge level
- Charges via USB-C, charging cable included

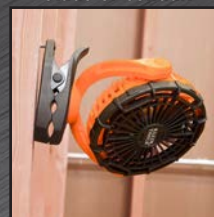
**Hang hole** incorporated into the base



**2 powerful magnets** for mounting to any ferrous surface



**Strong clamp** that will attach to studs or conduit



Cat. No.	Number of Speeds	Wattage	Mounting Type	Material	Diameter	Battery Life	Weight
A-PJSFM1	2	Max Charging Current: 2.0A, 10.0W	Magnets, Clamp, Hang Hole, Sit on Base	High Impact Polypropylene	Fan Cage 19.4 cm	High 5 Hrs, Low 9 Hrs	1.1 kg

## Klein Cooling Bandana

- Advanced PVA cooling technology
- Feels cooler than ambient air temperature
- Activates quickly; under a minute!
- Stays cool for hours
- Multi-use; reactivate several times
- To activate or re-use, wet bandana and gently wring out the excess water
- Machine or hand wash with mild detergent; air dry only



A-60123

Cat. No.	Color	Soaking Time	Material	Closure Type	Machine Washable	Size	Weight
A-60123	Black	Under One Minute	PVA Material	Tie	Yes	90.2 x 5.1 cm	28 g



## Pouches

### 11-Pocket Leather Tool Pouch

- Multi-pocketed pouch holds a variety of tools
- Soft, pliable, and moisture-resistant to retain flexibility even after being wet and dried
- Slotted to fit belts up to 70 mm wide
- Stitched and riveted leather construction for long life
- Includes knife snap, chain tape thong and metal tape measure holder clip
- Assembled in USA of U.S. and imported components



A-5167

Cat. No.	Number of Pockets	Material	Belt Connection	Belt Width	Color	Size	Weight
A-5167	11	Leather	Slotted	70 mm	Black	26.7 x 25.4 x 7 cm	0.7 kg

### Tradesman Pro™ Tool Pouch

- Tool Pouch has heavy duty reinforced bottoms
- Electrician Bag features one deep center pocket and five outside pockets
- Carry a variety of screwdrivers and other tools, plus tape thong
- Tunnel loop fits 51mm belts



A-5241

Cat. No.	Number of Pockets	Material	Belt Connection	Belt Width	Color	Size	Weight
A-5241	6	1680d Ballistic Weave	Tunnel	51 mm	Black/Orange	26 x 26 x 17.2 cm	367 g

### Tradesman Pro™ Tool Pouch

- Tool Pouch includes an electrical tape thong
- Bag has just enough pockets for your essential tools
- Tunnel loop fits 51mm belts
- Easy grab and go styling keeps your basic tools right at hand



A-5240

Cat. No.	Number of Pockets	Material	Belt Connection	Belt Width	Color	Size	Weight
A-5240	9	1680d Ballistic Weave	Tunnel	51 mm	Black/Orange	26 x 26 x 14 cm	177 g

### Tradesman Pro™ Tool Pouch

- Tool Pouch with heavy duty reinforced bottoms
- Belt Bag with deep center pocket and closed front pocket to carry small parts
- Includes an array of other pockets for various tools, plus a tape thong
- Convenient handle for 'pick up and go' mobility; shoulder strap for hands free carry
- Tunnel loop fits 51mm belts



A-5242

Cat. No.	Number of Pockets	Material	Belt Connection	Belt Width	Color	Size	Weight
A-5242	9	1680d Ballistic Weave with Reinforced Bottom	Tunnel	51 mm	Black/Orange	24.1 x 24.1 x 19.1 cm	0.5 kg

## Tool Bag, Tradesman Pro™ Shoulder Pouch

- Tool Bag with 14 pockets for better tool storage
- Tool organizer has large pockets for easy access to small parts and tools
- Fully molded bottom for stability and protects from the elements
- Orange interior for better tool visibility
- 1680d ballistic weave for durability
- Shoulder strap with extra padding and handle for easy carrying



A-55419SP-14

Cat. No.	Number of Pockets	Material	Closure Type	Color	Size	Weight
A-55419SP-14	14 (10 Interior, 4 Exterior)	1680d Ballistic Weave	Open Top	Black/Orange	20.3 x 25.4 x 12.7 cm	1.4 kg

## Backpack

### Tradesman Pro™ Tool Bag Backpack

- Backpack with REALTREE® AP-XTRA Camouflage Design
- 39 pockets for tons of tool storage
- Hard molded front pocket protects safety glasses
- Front zipper pocket for small parts and tools
- Taller bag and interior pockets allow for long screwdrivers
- Orange interior for easy tool visibility
- Water resistant 1680d ballistic weave for durability
- REALTREE®AP-XTRA Camouflage Design©2012 of Jordan Outdoor Enterprises, Ltd., all rights reserved



A-55421BP-14CAMO

Cat. No.	Number of Pockets	Material	Closure Type	Color	Size	Weight
A-55421BP-14CAMO	39 (35 Interior, 4 Exterior)	1680d Ballistic Weave	Zipper	Camo	36.8 x 50.8 x 18.4 cm	2.7 kg

## Accessories

### Tradesman Pro™ Suspenders

- Made of tear-resistant Cordura® fabric
- Fully adjustable
- Durable nylon web straps for long wear
- Heavy duty padding for comfort
- Easy snap hook fastening system
- Cordura® is a registered trademark of INVISTA for durable fabrics



A-55400

Cat. No.	Strap Width	Belt Width	Color	Size	Weight
A-55400	3.8 cm	5.1 cm	Black	One Size Fits Most	381 g

# TRADESMAN PRO™

## CLICK LOCK™ MODULAR SYSTEM

BUILD YOUR OWN TOOL BELT AND STORAGE SYSTEM



**TOOL BELT**  
**CUSTOMIZE**

**SHOP / GARAGE**  
**ORGANIZE**

**WORK VAN / TRUCK**  
**MOBILIZE**

Cat. No.	Description	# of Pockets
A-55912	Modular Piping Pouch with Clip	7
A-55913	Modular Parts Pouch with Clip	7
A-55914	Modular Trimming Pouch with Clip	8
A-55917	Modular Drill Pouch with Clip	4

Cat. No.	Description	Waist Size
A-55918	Modular Tool Belt, Medium	78.7 to 86.4 cm
A-55919	Modular Tool Belt, Large	88.9 to 99.1 cm
A-55920	Modular Tool Belt, Extra-large	101.6 to 111.8 cm
A-55400	Suspenders	One size fits most

Cat. No.	Description	Overall Length
A-55921	Modular Wall Rack	31 cm

**CLICK LOCK™ MODULAR SYSTEM**

Build your own tool belt and carry only the tools you need with the **Modular Tool Pouch System**. Then store pouches in your garage, shop or work van with our Wall Rack.

All pouches include belt clip for secure attachment to Modular Belt. 32° clip design allows pouch to move with you to keep contents upright.



## Impact Punchdown Tool

- Punchdown tool terminates and cuts wires in CAT3, CAT5e and CAT6/6A cable in one step
- Punch cables into 66/110 panels and blocks
- Metal injection molding (MIM) blade for durability (included)
- Traditional punchdown style with cushioned handle for comfort with non-slip grip
- Provides precise, reliable connections every time
- Spring loaded for fast, low effort seating and terminating
- Selectable (Hi/Low) impact-force setting lever
- Includes a pick and spudger with wave washer to help keep desired position
- Bayonet style (twist and lock) socket accepts most manufacturers' blades
- Extended reach blade (Cat. No. VDV427-110) for working on active panels with pre-existing connections (sold separately)
- Replacement blades available (Cat. No. VDV427-104)



A-VDV427-300

Cat. No.	Blade Configuration End 1	Blade Configuration End 2	Material	Color	Overall Length	Weight
A-VDV427-300	110 Terminate and Cut	66 Terminate and Cut	Plastic, Metal	Black, Yellow, Red	15.2 cm	227 g

## Test + Map™ Remotes (#7 - #12) Expansion Kit for Scout® Pro 3 Tester

- Increase your testing capability by 6 with these smart remote (#7 - #12)
- Test voice (RJ11/12), data (RJ45) and video (F-connector) coax connections when used with the Scout® Pro 3 tester (sold separately)
- Test, map and identify in a single step cutting testing time in half
- Includes: 6 Test + Map™ remotes (#7 - #12), 6 female-to-female coax adapters, 6 RJ45 jumper test cables, 2 RJ11 jumper cables, 2 RJ12 jumper cables and a zipper bag
- Remotes are numbered #7 - #12 for easy identification
- Each remote features an RJ45 jack to test data cables and a male F connector to test coaxial cables
- Soft, slip-resistant overmold on each remote for easy gripping and heavy-duty, recessed-jack design for durability
- Jumper cables connect the Test + Map™ remotes to wall outlets
- Klein Universal RJ11/RJ12 jumper cable included to test phone jacks with no damage to these remotes
- Durable, nylon zipper pouch holds all of the pieces in one place. Also, available separately ( Cat. No. VDV770-127)

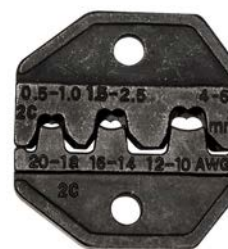


A-VDV770-851

Cat. No.	Connection & Adapter Types	Material	For Use With	Overall Length	Weight
A-VDV770-851	RJ45, Coax F	Polycarb, Rubber, Steel, PCB Board	Scout® Pro 3 Tester	17.5 cm	0.5 kg

## Crimper Die for Non-Insulated Terminal or Open Barrel Terminals

- Precise nest dimensions ensure accurate crimper terminations that meet or exceed common standards
- Die Set only
- Klein offers a lifetime warranty on material defects and workmanship for the normal life of the product
- Additional, optional die sets include: VDV212-034 (CATV F-Connector RG59/6); VDV205-035 (Insulated Terminal AWG10-22); VDV211-037 (RG6/58/59/62)cs
- Tool?



A-VDV205-036

Cat. No.	Die Set	Nest Dimension	Weight
A-VDV205-036	Non-Insulated Terminal or Open Barrel Terminal, AWG 10-20	AWG 20-18/16, 14/12-10 DIN 0.5-1.5-2.5 4 - 6 mm	64 g

## 18-Compartment VDV ProTech™ Transport Tool Case

- Upper tier features 12 organizational compartments designed for small parts like connectors, screws or other small pieces you have lying around
- Lower tier has 6 larger and deeper compartments for any medium size tools like wire strippers and crimpers
- Heavy duty plastic makes the case surprisingly lightweight, despite its durability
- Upper tier of compartments are visible through a transparent, hinged plastic lid
- Textured feet on the bottom of the case aid in overall stability, and help to avoid slippage
- The entire first tier of compartments swivels upward while you access the lower compartments so you can view both your tools and connectors simultaneously
- Dual metal locks tightly seal the case and a heavy duty handle makes it easy to carry
- The sturdy handle clicks vertically into place when in use



A-VDV000-133

Cat. No.	Weight
A-VDV000-133	2.2 kg



# Alco

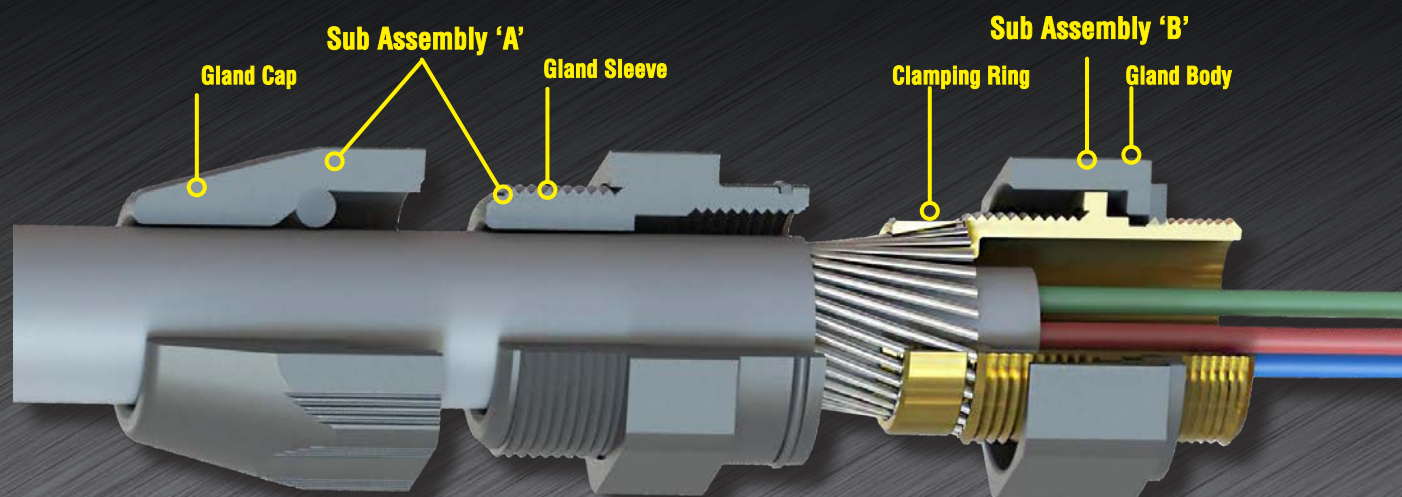
---

Alco was the first brand to provide a comprehensive range of Metal Cable Glands designed in Australia to meet Australian and International Standards. Alco premium quality cable glands are manufactured to comply with the requirements of the AS/NZS 60079.2000 (equivalent to IEC 60079/1998) standards.



## 'STORM' NYLON COATED BRASS GLAND FOR ARMoured CABLE WITH LOCKNUT AND EARTH TAGS

*No Shroud  
No Worries*



- Approved to IEC 62444
- Fast fit
- No shroud required
- IP68 rated
- Corrosion resistant
- UV stabilised
- Zero halogen
- Comes with: Gland, locknuts and earth tag.



Cat. No.	Entry Thread Ø x L	Max. Diameter over bedding (mm)	Cable Diameter Range Min.-Max (mm)	Armour Wire Ø Min.-Max (mm)	Length Exposed SWA required Length (mm)	Anchorage	Impact	Tightening Torque	
								Cap	Sleeve
ALCAW20ZNC	M20 x 17	12	8.0-12.0	0.8-1.25	20.0 mm	Type D	Category 5	2.5 N.m	8 N.m
ALCAW20SBNC	M20 x 17	12	12.0-16.0	0.8-1.25	20.0 mm	Type D	Category 5	2.5 N.m	8 N.m
ALCAW20NC	M20 x 17	16	16-21.0	0.8-1.25	20.0 mm	Type D	Category 5	3 N.m	12 N.m
ALCAW25NC	M25 x 17	20.5	21.0-27.5	1.2-1.6	25.0 mm	Type D	Category 5	5 N.m	25 N.m
ALCAW32NC	M32 x 17	27.5	27.5-35.0	1.6-2	30.0 mm	Type D	Category 5	5 N.m	40 N.m
ALCAW40NC	M40 x 22	34	33.0-41.0	1.6-2	30.0 mm	Type C	Category 5	5 N.m	50 N.m
ALCAW50NC	M50 x 22	44	37.0-47.0	2-2.5	30.0 mm	Type C	Category 5	10 N.m	70 N.m
ALCAW50LNC	M50 x 22	44	45.0-53.0	2-2.5	30.0 mm	Type C	Category 5	10 N.m	70 N.m
ALCAW63NC	M63 x 22	57	50.0-60.0	2-2.5	30.0 mm	Type C	Category 5	10 N.m	100 N.m
ALCAW63LNC	M63 x 22	57	60.0-66.0	2-2.5	30.0mm	Type C	Category 5	10 N.m	100 N.m



## Accessories

### Brass Reducer for Hazardous Areas

- For indoor or outdoor use
- Reduces enclosure mounting thread to suit fitting/gland
- Degree of protection against ingress of water IP66/68
- Compliance with IECEx CES 13.0022X
- Locknut is supplied as standard

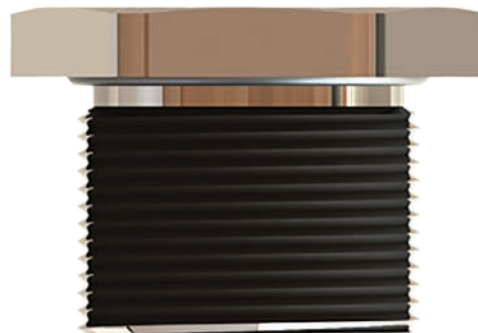
**Protection types:** Ex db IIC Gb, Ex eb IIC Gb, Ex tb IIIC Db, IP66/68

**Standards:** IEC/AS/NZS60079 (.0, .1, .7, .31), IEC/AS/NZS 60529

**Material:** Brass, Nickel Plated

**Seal:** Silicone (Metric only)

**Temperature Range:** -60°C/+130°C



Cat. No.	Male Thread Diameter x Length	Female Thread Diameter x Length	Reducer Diameter		Length	Torque - NM
			Across Flats	Across Points		
Metric Thread						
ALCBIMBRBM16M12	M16 x 15	M12 x 19	22	24	19	4
ALCBIMBRBM20M12	M20 x 15	M12 x 19	25	27.5	19	5.5
ALCBIMBRBM20M16	M20 x 15	M16 x 19	25	27.5	19	5.5
ALCBIMBRBM25M16	M25 x 15	M16 x 19	30	33	19	6
ALCBIMBRBM25M20	M25 x 15	M20 x 19	30	33	19	6
ALCBIMBRBM32M20	M32 x 15	M20 x 19	36	39.5	19	6
ALCBIMBRBM32M25	M32 x 15	M25 x 19	36	39.5	19	6
ALCBIMBRBM40M25	M40 x 18	M25 x 22	45	50	22	12
ALCBIMBRBM40M32	M40 x 18	M32 x 22	45	50	22	12
ALCBIMBRBM50M32	M50 x 18	M32 x 23	55	61	23	18
ALCBIMBRBM50M40	M50 x 18	M40 x 23	55	61	23	18
ALCBIMBRBM63M40	M63 x 18	M40 x 23	70	77	23	25
ALCBIMBRBM63M50	M63 x 18	M50 x 23	70	77	23	25
ALCBIMBRBM75M50	M75 x 18	M50 x 24	85	94	24	30
ALCBIMBRBM75M63	M75 x 18	M63 x 24	85	94	24	30
ALCBIMBRBM90M63	M90 x 21	M63 x 29	100	111	29	35
ALCBIMBRBM90M75	M90 x 21	M75 x 29	100	111	29	35
NPT Thread						
ALCBIMBRBN34M20	NPT 3/4" X 15	M20 x 19	30	33	19	-
ALCBIMBRBN100M25	NPT 1" X 15	M25 x 19	36	39.5	19	-

# All dimensions in mm unless otherwise specified. Note: metric threads 1.5mm pitch, unless otherwise specified.

### Brass Plug for Hazardous Areas

- For indoor or outdoor use
- Provides seal on enclosure for unused entries
- Degree of protection against ingress of water IP66/68
- Compliance with IECEx CES 13.0022X
- Locknut is supplied as standard

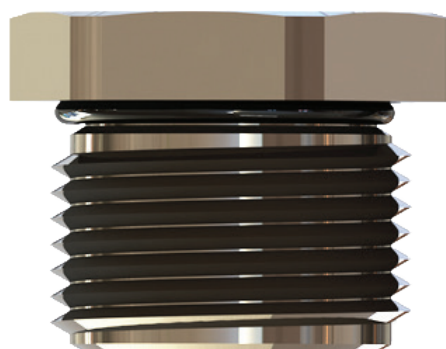
**Protection types:** Ex db IIC Gb, Ex eb IIC Gb, Ex tb IIIC Db, IP66/68

**Standards:** IEC/AS/NZS60079 (.0, .1, .7, .31), IEC/AS/NZS 60529

**Material:** Brass, Nickel Plated

**Seal:** Silicone

**Temperature Range:** -60°C/+130°C



Cat. No.	Thread Diameter x Length	Diameter		Plug Length	Torque - NM
		Across Flats	Across Points		
ALCBIMBPBM12	M12 x 15.5	17	18.9	21	N/A
ALCBIMBPBM16	M16 x 15.5	22	24	21	4 ±0.5
ALCBIMBPBM20	M20 x 15.5	25	27.5	21	5.5 ±0.5
ALCBIMBPBM25	M25 x 15.5	30	33	21	6 ±1
ALCBIMBPBM32	M32 x 15.5	37	41	21	6 ±1
ALCBIMBPBM40	M40 x 17.5	45	50	23	12 ±1.5
ALCBIMBPBM50	M50 x 17.5	55	61	23	18 ±2
ALCBIMBPBM63	M63 x 17.5	70	77	23	25 ±2.5

# All dimensions in mm unless otherwise specified. Note: metric threads 1.5mm pitch, unless otherwise specified.

## Brass Enlarger for Hazardous Areas

- For indoor or outdoor use
- Increases enclosure mounting thread to suit fitting/gland
- Degree of protection against ingress of water IP66/68
- Compliance with IECEx CES 13.0022X
- Locknut is supplied as standard

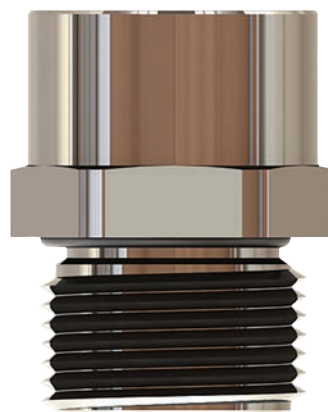
**Protection types:** Ex db IIC Gb, Ex eb IIC Gb, Ex tb IIIC Db, IP66/68

**Standards:** IEC/AS/NZS60079 (.0, .1, .7, .31), IEC/AS/NZS 60529

**Material:** Brass, Nickel Plated

**Seal:** Silicone

**Temperature Range:** -60°C/+130°C



Cat. No.	Male Thread Diameter x Length	Female Thread Diameter x Length	Enlarger Diameter		Length	Int Diameter	Torque (NM)
			Across Flats	Across Points			
Metric Thread							
ALCBIMBZBM16M20	M16 x 15	M20 x 15	25	27.5	34	10.0	4
ALCBIMBZBM16M25	M16 x 15	M25 x 15	30	33	34	10.0	4
ALCBIMBZBM20M25	M20 x 15	M25 x 15	30	33	34	14.0	5.5
ALCBIMBZBM20M32	M20 x 15	M32 x 15	36	39.5	34	14.0	5.5
ALCBIMBZBM25M32	M25 x 15	M32 x 15	36	39.5	34	19.0	6
ALCBIMBZBM25M40	M25 x 15	M40 x 18	45	50	37	19.0	6
ALCBIMBZBM32M40	M32 x 15	M40 x 18	45	50	37	26.0	6
ALCBIMBZBM32M50	M32 x 15	M50 x 18	55	61	37	26.0	6
ALCBIMBZBM40M50	M40 x 18	M50 x 18	55	61	40	34.0	12
ALCBIMBZBM50M63	M50 x 18	M63 x 18	68	75	40.5	44.0	18
ALCBIMBZBM63M75	M63 x 18	M75 x 18	80	88.5	40.5	57.0	25
ALCBIMBZBM75M90	M75 x 18	M90 x 21	95	105	43.5	69.0	30
NPT Thread							
ALCBIMBZBN38M16	NPT 3/8" X 15	M16 x 15	22	24	33.5	12	-
ALCBIMBZBN12M20	NPT 1/2" X 15	M20 x 15	25	27.5	34	14.5	-
ALCBIMBZBN34M25	NPT 3/4" X 15	M25 x 15	30	33	34	7	-
# All dimensions in mm unless otherwise specified. Note: metric threads 1.5mm pitch, unless otherwise specified.							

# All dimensions in mm unless otherwise specified. Note: metric threads 1.5mm pitch, unless otherwise specified.

## Nylon Plug for Hazardous Areas

- For indoor or outdoor use
- Provides seal on enclosure for unused entries
- Degree of protection against ingress of water IP66/68
- Compliance with IECEx IMQ 13.0003X
- Locknut is supplied as standard

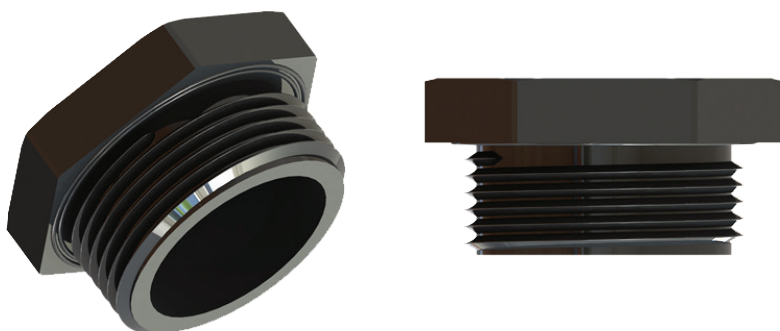
**Protection types:** Ex eb IIC Gb, Ex tb IIIC Db, IP66/68

**Standards:** IEC/AS/NZS60079 (.0, .7, .31), IEC/AS/NZS 60529

**Material:** Nylon PA6

**Seal:** Silicone

**Temperature Range:** -60°C/+80°C



Cat. No.	Thread Diameter x Length	Diameter		Plug Length	Torque - NM
		Across Flats	Across Points		
ALCBIMBPPM12	M12 x 10	15	17	15	1.5
ALCBIMBPPM16	M16 x 11	19	22	15.3	1.5
ALCBIMBPPM20	M20 x 11	23	26	17	2.0
ALCBIMBPPM25	M25 x 10	28	32	16	2.5
ALCBIMBPPM32	M32 x 15	36	41.5	23	4.0
ALCBIMBPPM40	M40 x 18	46	53	26.5	6.0
ALCBIMBPPM50	M50 x 18	55	63.5	27.5	8.0
ALCBIMBPPM63	M63 x 18	69	79.5	27.5	10

## Brass Female Couplings for Hazardous Areas

- For indoor or outdoor use
- Jointing of conduit - male to male penetration
- Degree of protection against ingress of water IP66/68
- Compliance with IECEx CES 13.0022X

**Protection types:** Ex db IIC Gb, Ex eb IIC Gb, Ex tb IIIC Db, IP66/68

**Standards:** IEC/AS/NZS60079 (.0, .1, .7, .31), IEC/AS/NZS 60529

**Material:** Brass, Nickel Plated

**Temperature Range:** -60°C/+130°C



Cat. No.	Threads Diameter x Length	Diameter		Length
		Across Flats	Across Points	
ALCBJBM16M16	M16 X 15	20	22	33
ALCBJBM20M20	M20 X 15	25	27.5	32
ALCBJBM25M20	M25 X 15 / M20 x 15	32	35	33
ALCBJBM25M25	M25 X 15	32	35	33
ALCBJBM32M32	M32 X 15	36	39.5	32
ALCBJBM40M40	M40 X 18	45	50	38
ALCBJBM50M50	M50 X 18	55	61	38
ALCBJBM63M63	M63 X 18	68	75	38

# All dimensions in mm unless otherwise specified. Note: metric threads 1.5mm pitch, unless otherwise specified.

## Brass Male Nipples for Hazardous Areas

- For indoor or outdoor use
- Jointing of conduit - female to female penetration
- Degree of protection against ingress of water IP66/68
- Compliance with IECEx CES 13.0022X

**Protection types:** Ex db IIC Gb, Ex eb IIC Gb, Ex tb IIIC Db, IP66/68

**Standards:** IEC/AS/NZS60079 (.0, .1, .7, .31), IEC/AS/NZS 60529

**Material:** Brass, Nickel Plated

**Seal:** Silicone

**Temperature Range:** -60°C/+130°C



Cat. No.	Threads Diameter x Length	Diameter		Length	ID
		Across Flats	Across Points		
ALCBNBM20M20	M20 X 15	24	26.5	48	14
ALCBNBM25M25	M25 X 15	32	35	50	19
ALCBNBM32M32	M32 X 15	36	39.5	50	26

# All dimensions in mm unless otherwise specified. Note: metric threads 1.5mm pitch, unless otherwise specified.



### Conduit & Pipe Flashing Base

- UV Stabilized EPDM
- Unique cone design
- Suits single pipe penetrations 0-35mm
- Withstands temperatures between -50c to 115c
- Designed for Australian conditions
- Aluminium base can be formed to suit your roof profile

**Material:** EPDM

Cat. No.	Pipe Size	Pack Size
ALCRPS35	0 - 35 mm	1
ALCRPS35/20	0 - 35 mm	20



ALCRPS35



## Hand Hydraulic Crimpers

### 6 Tonne Hand Hydraulic Crimping Range

- Flip open head with a wide opening for easy die & lug installation
- Easy operation
- Rigid and anti-slip handle
- To suit Alco 6 tonne copper and aluminium dies
- Comes in sturdy, portable carry case



ALCHC-6

Head type	Crimping Force	Rated Pressure	Crimping Capacity	Weight
Flip top	6 Tonne	720 Bar	Copper: 10-300 mm <sup>2</sup> Aluminium: 10-240mm <sup>2</sup>	3.7 kg

#### Available Kits

Cat. No.	Description	Kit Contains	
		Cat. No.	Description
ALCHC-6	6 Tonne Hand Hydraulic Crimper Tool	-	-
ALCHC-6/WD	6 Tonne Hand Hydraulic Crimper Tool with Dies	ALCHC-6 ALCK6-DIEKIT	6 Tonne Hand Hydraulic Crimper Tool 6 Tonne Die kit 10-300 mm <sup>2</sup> (Cu)

### 12 Tonne Hand Hydraulic Crimping Range

- C-head with large 42mm opening width
- Oil seal - Precision design, avoid oil leakage
- Rotating the handle enable pressure relief
- Easy operation
- Rigid and anti-slip handle
- To suit Alco 12 tonne copper and aluminium dies
- Comes in sturdy, portable carry case



ALCHC-12

Head type	Crimping force	Crimping capacity	Weight
C-Type	12 Tonne	Copper: 16-400mm <sup>2</sup> Aluminium: 10-300mm <sup>2</sup>	8.2 kg

#### Available Kits

Cat. No.	Description	Kit Contains	
		Cat. No.	Description
ALCHC-12	12 Tonne Hand Hydraulic Crimper Tool	-	-
ALCHC-12/WD	12 Tonne Hand Hydraulic Crimper Tool with Dies	ALCHC-12 ALCK12-DIEKIT	12 Tonne Hand Hydraulic Crimper Tool 12 Tonne Die kit 16-400 mm <sup>2</sup> (Cu)

### 6 Tonne Battery Crimping Range

- Flip open head with a wide opening for easy die & lug installation
- Suitable for crimping in narrow working spaces
- Super quick, light weight and easy to operate.
- Built in safety valve, automatic pressure-relief at Max. pressure.
- Built-in microchip controller, more crimping times with one time charge, protect the device body.
- Crimping head rotates 180 degrees, suitable for different angles.
- Battery not included



ALCCT-6

Head type	Crimping force	Rated Pressure	Crimping capacity	Weight
Flip top	6 Tonne	720 Bar	Copper: 10-300 mm <sup>2</sup> Aluminium: 10-240mm <sup>2</sup>	3.1 kg

Available Kits				
Cat. No.	Description	Kit Contains		
		Cat. No.	Description	
ALCCT-6/WA	6 Tonne Battery Crimper Tool with Adaptors	ALCCT-6	6 Tonne Battery Crimper (skin only)	
		ALCBAMKDW	Battery Adaptor Makita to Dewalt	
		ALCBAMKMW	Battery Adaptor Makita to Milwaukee	
ALCCT-6/KIT	6 Tonne Battery Crimper Kit	ALCCT-6	6 Tonne Battery Crimper (skin only)	
		ALCK6-DIEKIT	6 Tonne Die kit 10-300 mm (Cu)	
		ALCBAMKDW	Battery Adaptor Makita to Dewalt	
		ALCBAMKMW	Battery Adaptor Makita to Milwaukee	

### 12 Tonne Battery Crimping Range

- Large opening, robust and durable, 360°C rotatable head
- Multifunctional LED light to indicate low battery charge and maintenance control
- Quick retract by pressing the button if necessary
- Ergonomic 2-compoent housing design, optimized centre of gravity for easy handling
- 12-tonne output, efficient and quick, accurate crimping
- Battery not included



ALCCT-12

Head type	Crimping force	Jaw opening	Crimping capacity	Weight
C-Type	12 Tonne	42 mm	Copper: 16-400mm <sup>2</sup> Aluminium: 10-300mm <sup>2</sup>	7.0 kg

Available Kits				
Cat. No.	Description	Kit Contains		
		Cat. No.	Description	
ALCCT-12/WA	12 Tonne Battery Crimper Tool with Adaptors	ALCCT-12	12 Tonne Battery Crimper (skin only)	
		ALCBAMKDW	Battery Adaptor Makita to Dewalt	
		ALCBAMKMW	Battery Adaptor Makita to Milwaukee	
ALCCT-12/KIT	12 Tonne Battery Crimper Kit	ALCCT-12	12 Tonne Battery Crimper (skin only)	
		ALCK12-DIEKIT	12 Tonne Die kit 16-400 mm	
		ALCBAMKDW	Battery Adaptor Makita to Dewalt	
		ALCBAMKMW	Battery Adaptor Makita to Milwaukee	








## Pre-Insulated Terminals

### Pre-Insulated Terminals






- Pre-insulated double crimp terminals
- Three piece construction
- Colour-coded PVC insulation for easy identification
- Easy entry

Operating Temperature: +105°C

Red				
Cat. No.	Conductor Size (0.5-1.5mm²)	Width (mm)	Voltage Maximum	Pack Qty
Fully Insulated Quick Disconnects				
ALCFIFQDR4.8/50		4.8	300 V	50
Quick Disconnects		Width (mm)		Pack Qty
ALCFQDR2.8/100		2.8	300 V	100
ALCFQDR4.8/100		4.8	300 V	100
Ring Terminals		Stud size (mm)		Pack Qty
ALCRB12/50		12	600 V	100
Flat Blade Terminals		Blade Length (mm)		Pack Qty
ALCBFBR3/100		3	600 V	100

### NEW SIZES



Blue				
Cat. No.	Conductor Size (1.5-2.5mm²)	Width (mm)	Voltage Maximum	Pack Qty
Fully Insulated Quick Disconnects				
ALCFIQDB4.8/50		4.8	300 V	50
Quick Disconnects		Width (mm)		Pack Qty
ALCFQDB2.8/100		2.8	300 V	100
ALCFQDB4.8/100		4.8	300 V	100
Ring Terminals		Stud size (mm)		Pack Qty
ALCRR12/100		12	600 V	100
Flat Blade Terminals		Blade Length (mm)		Pack Qty
ALCBFBB2.4/100		2.4	600 V	100

## Bootlace Terminals

### Pre-Insulated Bootlace Terminals

- Pre-insulated bootlace terminals
- Provide precise terminations to multi-stranded cable
- Reduces possibility of short-circuiting and ensures no strands stray
- Colour-coded Polyamide insulation for easy identification
- 600V max

Operating Range: +105°C



Cat. No.	Conductor Size (mm <sup>2</sup> )	Dimensions (mm)				Pack Qty	Colour
		L	F	C	W		
ALCBLBK-18/100	1.5	24	18.0	1.7	3.5	100	Black
ALCBLGY-18/100	2.5	24	18.0	2.2	4.2	100	Grey
ALCBLO-18/100	4.0	26	18.0	2.8	4.8	100	Orange

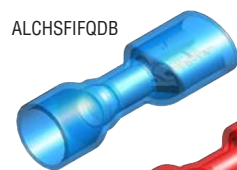
## Heatshrink Terminals

### Insulated Heatshrinkable Quick Disconnect Terminals

- Heatshrinkable quick disconnect terminals provide water resistant connections
- Single crimp insulation seal
- Electro tin plated
- 600V max

**Shrink temperature:** +150°C

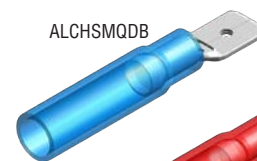
**Operating Range:** -10°C to + 105°C



ALCHSFIFQDB



ALCHSFIFQDR



ALCHSMQDB



ALCHSMQDR

Cat. No.	Description	Conductor Size (mm <sup>2</sup> )	Dimensions (mm)				Pack Qty	Colour
			Length	Blade Width	Max & Ø	HD Sleeve ID		
ALCHSFIFQDB/500	Fully Insulated Quick Disconnects	1.5 - 2.5	28	6.4	2.7	7.5	500	Blue
ALCHSFIFQDR/500	Fully Insulated Quick Disconnects	0.5 - 1.5	28	6.4	2.7	7.5	500	Red
ALCHSMQDB/500	Quick Disconnects	1.5 - 2.5	37	6.4	2.3	5.5	500	Blue
ALCHSMQDR/500	Quick Disconnects	0.5 - 1.5	37	6.4	1.7	4.5	500	Red

## Non-insulated & Brass Terminals

### NEW SIZE

#### Non-Insulated Ring Terminals

- Non-insulated copper terminals suitable for stranded to fine-stranded cable
- Electro tinned finish for high conductivity
- Easy to connect

Cat. No.	Conductor size	Stud size (mm)	Pack Qty
ALCRBU4	1.5-2.5mm <sup>2</sup>	4.0	1



ALCRBU4

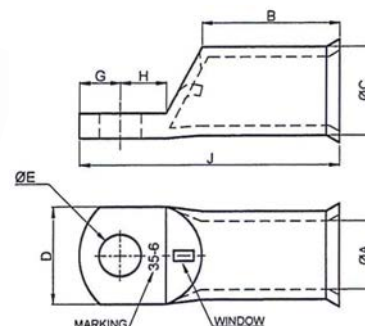
## Non-Insulated Lugs

### Non-Insulated Circuit Breaker Lugs

### NEW SIZES

- Non-insulated electro grade copper crimp lugs suitable for stranded to fine-stranded copper cable
- Electro tinned finish for corrosion resistance
- 99.9% copper for high conductivity
- Includes inspection port
- All sizes can be sold individually

**Operating Temperature:** -55°C to +155°C

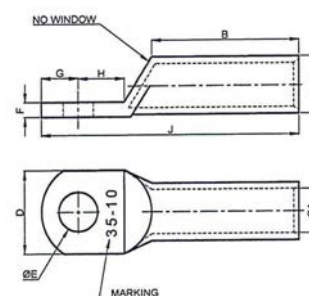


Cat. No.	Conductor Size (mm <sup>2</sup> )	STUD SIZE (mm)	Dimensions (mm)						
			Barrel Id	Barrel Od	Palm Width	Barrel Length	Stud Dist From Barrel	Stud Dist From Top	Total Length
			A	C	D	B	H	G	J
ALCLCB300M12	300	13.0	23.5	31.3	31	42	20	12	87

### Non-Insulated Long Barrel Copper Lugs

- Non-insulated electro grade copper crimp lugs suitable for stranded copper cable
- Electro tinned finish for corrosion resistance
- 99.9% copper for high conductivity
- All sizes can be sold individually

**Operating Temperature:** -55°C to +155°C

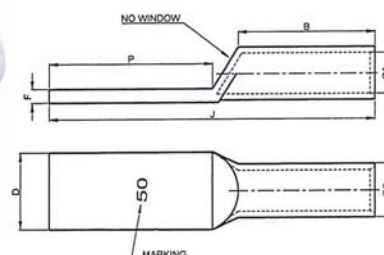


Cat. No.	Conductor Size (mm <sup>2</sup> )	Stud size (mm)	Dimensions (mm)							
			Barrel ID	Barrel OD	Palm Width	Palm Thickness	Barrel Length	Stud Dist From Barrel	Stud Dist From Top	Total Length
		E	A	C	D	F	B	H	G	J
ALCLLB400MB	400	-	26.8	34.8	50	7.9	93	28	24	163
ALCLLB500MB	500	-	30.0	39.0	56	7.6	105	27	27	174
ALCLLB630MB	630	-	34.0	45.0	64.4	9.5	110	32	32	191

### Non-Insulated Long Palm Long Barrel Copper Lugs

- Non-insulated Non-insulated electro grade copper crimp lugs suitable for stranded copper cable
- Made with a long barrel and a long palm
- No hole
- Electro tinned finish for corrosion resistance
- 99.9% copper for high conductivity
- All sizes can be sold individually

**Operating Temperature:** -55°C to +155°C



Cat. No.	Conductor Size (mm <sup>2</sup> )	Dimensions (mm)						
		Barrel Id	Barrel Od	Palm Width	Palm Thickness	Barrel Length	Tongue Length	Total Length
		A	C	D	F	B	P	J
ALCLLPB400	400	26.8	34.8	50	7.7	100	110	225
ALCLLPB500	500	30.0	39.0	56	8.7	105	110	230
ALCLLPB630	630	34.0	45	63	10.8	115	110	242



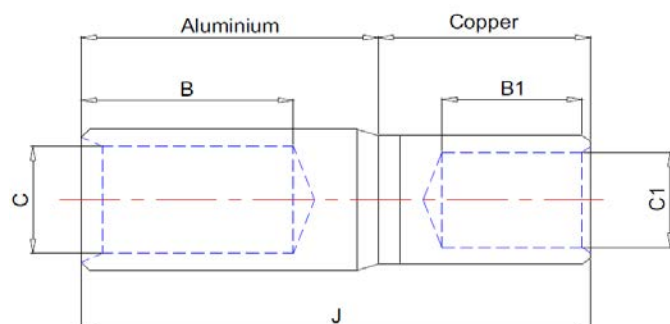
### Non-Insulated Bi-metallic Reducing links

- For flexible & stranded CU - Conductors & Winding Conduct
- Aluminium Sleeve 99.6%pure
- Copper Palm 99.9%pure
- Tensile Strength 110Mpa
- Ductile Rating 28%
- Final Metal State Fully Annealed inc.joint
- Joining Method Friction Weldings

**Operating Temperature:** -55°C to +155°C

**Resistivity:** 2.6micro-ohm cm (max):aluminium  
7.738 micro-ohm cm:copper

**Conductivity:** 61.8% IACS(min):aluminium  
99.7% IACS : copper



Cat. No.	Conductor Size		Dimensions (mm)		Copper Dimensions (mm)		Total Length	No of Crimps	Pack Qty
	Alluminium	Copper	C	B	C1	B1	J		
ALCLKCA6-4	6 mm²	4 mm²	3.5	32	3.0	21	70	1	25
ALCLKCA6-6	6 mm²	6 mm²	3.5	32	3.5	21	70	1	25
ALCLKCA10-6	10 mm²	6 mm²	4.5	32	3.5	21	70	1	25
ALCLKCA10-10	10 mm²	10 mm²	4.5	32	4.5	21	70	1	25
ALCLKCA16-10	16 mm²	10 mm²	5.5	32	4.5	21	70	1	25
ALCLKCA16-16	16 mm²	16 mm²	5.5	32	5.5	21	70	1	25
ALCLKCA25-16	25 mm²	16 mm²	7.5	32	5.5	21	70	1	25
ALCLKCA25-25	25 mm²	25 mm²	7.5	32	7.3	21	70	1	25
ALCLKCA35-25	35 mm²	25 mm²	8.5	32	7.3	21	70	1	25
ALCLKCA35-35	35 mm²	35 mm²	8.5	32	8.2	21	70	1	25
ALCLKCA50-35	50 mm²	35 mm²	9.5	32	8.2	24	70	1	10
ALCLKCA50-50	50 mm²	50 mm²	9.5	32	9.5	24	70	1	10
ALCLKCA70-25	70 mm²	25 mm²	11.5	32	7.3	24	70	1	10
ALCLKCA70-35	70 mm²	35 mm²	11.5	32	8.2	24	70	1	10
ALCLKCA70-50	70 mm²	50 mm²	11.5	32	9.5	24	70	1	10
ALCLKCA70-70	70 mm²	70 mm²	11.5	32	11.5	24	70	1	10
ALCLKCA95-35	95 mm²	35 mm²	13.8	60	8.2	32	110	1	10
ALCLKCA95-50	95 mm²	50 mm²	13.8	60	9.5	32	110	1	10
ALCLKCA95-70	95 mm²	70 mm²	13.8	60	11.5	32	110	1	10
ALCLKCA95-95	95 mm²	95 mm²	13.8	60	13.5	32	110	1	10
ALCLKCA120-50	120 mm²	50 mm²	15.5	60	9.5	32	110	1	10
ALCLKCA120-70	120 mm²	70 mm²	15.5	60	11.5	32	110	1	10
ALCLKCA120-95	120 mm²	95 mm²	15.5	60	13.5	32	110	1	10

Cat. No.	Conductor Size		Dimensions (mm)		Copper Dimensions (mm)		Total Length	No of Crimps	Pack Qty
	Aluminium	Copper	C	B	C1	B1	J		
ALCLKA120-120	120 mm <sup>2</sup>	120 mm <sup>2</sup>	15.5	60	15.5	32	110	1	10
ALCLKA150-70	150 mm <sup>2</sup>	70 mm <sup>2</sup>	16.5	60	11.5	40	120	1	10
ALCLKA150-95	150 mm <sup>2</sup>	95 mm <sup>2</sup>	16.5	60	13.5	40	120	1	10
ALCLKA150-120	150 mm <sup>2</sup>	120 mm <sup>2</sup>	16.5	60	15.5	40	120	1	10
ALCLKA150-150	150 mm <sup>2</sup>	150 mm <sup>2</sup>	16.5	60	16.5	40	120	1	10
ALCLKA185-95	185 mm <sup>2</sup>	95 mm <sup>2</sup>	18.0	60	13.5	40	120	1	6
ALCLKA185-120	185 mm <sup>2</sup>	120 mm <sup>2</sup>	18.0	60	15.5	40	120	1	6
ALCLKA185-150	185 mm <sup>2</sup>	150 mm <sup>2</sup>	18.0	60	16.5	40	120	1	6
ALCLKA185-185	185 mm <sup>2</sup>	185 mm <sup>2</sup>	18.0	60	18.5	40	120	1	6
ALCLKA240-120	240 mm <sup>2</sup>	120 mm <sup>2</sup>	22.0	60	15.5	40	120	1	6
ALCLKA240-150	240 mm <sup>2</sup>	150 mm <sup>2</sup>	22.0	60	16.5	40	120	1	6
ALCLKA240-185	240 mm <sup>2</sup>	185 mm <sup>2</sup>	22.0	60	18.5	40	120	1	6
ALCLKA240-240	240 mm <sup>2</sup>	240 mm <sup>2</sup>	22.0	60	21.5	40	120	3	6
ALCLKA300-150	300 mm <sup>2</sup>	150 mm <sup>2</sup>	23.5	60	16.5	40	120	1	6
ALCLKA300-185	300 mm <sup>2</sup>	185 mm <sup>2</sup>	23.5	60	18.5	40	120	1	3
ALCLKA300-240	300 mm <sup>2</sup>	240 mm <sup>2</sup>	23.5	60	21.5	40	120	3	3
ALCLKA300-300	300 mm <sup>2</sup>	300 mm <sup>2</sup>	23.5	60	23.5	40	120	3	6
ALCLKA400-240	400 mm <sup>2</sup>	240 mm <sup>2</sup>	26.5	75	21.5	55	155	3	1



### Hot Dip Galvanised Half Saddles

- For use indoors and outdoors



Cat. No.	Nominal Size	Securing Hole Diameter	Height	Length	Width	Pack Size
ALCS16HHG/100	16 mm	5.1 mm	17.7 mm	44.1 mm	18.9 mm	100
ALCS20HHG/100	20 mm	5.1 mm	21.5 mm	51.0 mm	18.9 mm	100
ALCS25HHG/100	25 mm	5.1 mm	26.2 mm	59.4 mm	25 mm	100
ALCS32HHG/50	32 mm	6.6 mm	33.2 mm	66.2 mm	25 mm	50
ALCS40HHG/50	40 mm	6.6 mm	41.2 mm	72.2 mm	32 mm	50
ALCS50HHG/25	50 mm	6.6 mm	50.0 mm	80.6 mm	39 mm	25

### Hot Dip Galvanised Full Saddles

- For use indoors and outdoors



Cat. No.	Nominal Size	Securing Hole Diameter	Height	Length	Width	Pack Size
ALCS16FHG/100	16 mm	5.2 mm	17.3 mm	46.7 mm	13.1 mm	100
ALCS20FHG/100	20 mm	5.2 mm	21.8 mm	52 mm	16.1 mm	100
ALCS25FHG/100	25 mm	5.6 mm	26.8 mm	62.5 mm	19.1 mm	100
ALCS32FHG/50	32 mm	5.6 mm	33.7 mm	77.9 mm	25.1 mm	50
ALCS40FHG/50	40 mm	5.6 mm	42.5 mm	87.0 mm	25 mm	50
ALCS50FHG/25	50 mm	5.6 mm	51.6 mm	103.5 mm	25 mm	25
ALCS63FHG/25	63 mm	7 mm	66 mm	130 mm	39 mm	25
ALCS80FHG/25	80 mm	9 mm	92 mm	166 mm	39 mm	25
ALCS100FHG/10	100 mm	9 mm	118 mm	190 mm	39 mm	10



## Heatshrink And Accessories

### Thin Wall Glue Lined Heatshrink

- Heatshrink is ideally used for heavy duty and general purpose use i.e. electrical insulation, termination, splicing, bundling, cable protection and strain relief. Thin wall glue lined heatshrink will also make a waterproof seal between cable sheath and heatshrink tube.
- Suitable for waterproof cable joints and terminations. Diameters from 1 to 125mm.
- Low shrink temperature and flame retardant
- Flexible and UV resistant
- RoHS Compliant
- UV Stable glue lining
- High reduction (3:1) tubing
- Black colour only

**Shrink Temperature:**  $\geq 95^{\circ}\text{C}$

**Shrink Ratio:** Radial Shrinking Ratio:  $> 3:1$

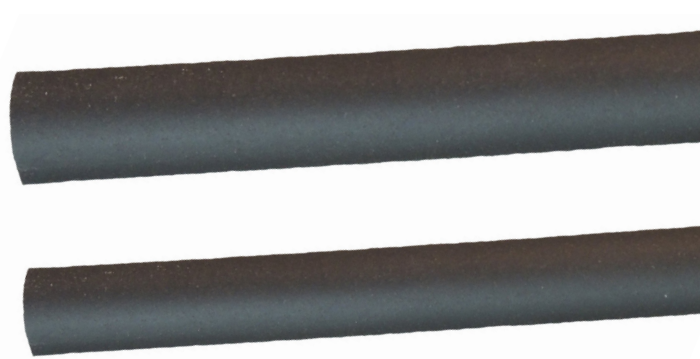
Longitudinal Shrinking Ratio:  $< 10\%$

**Tensile Strength:**  $\geq 12 \text{ MPa}$

**Elongation at Break:**  $\geq 300\%$

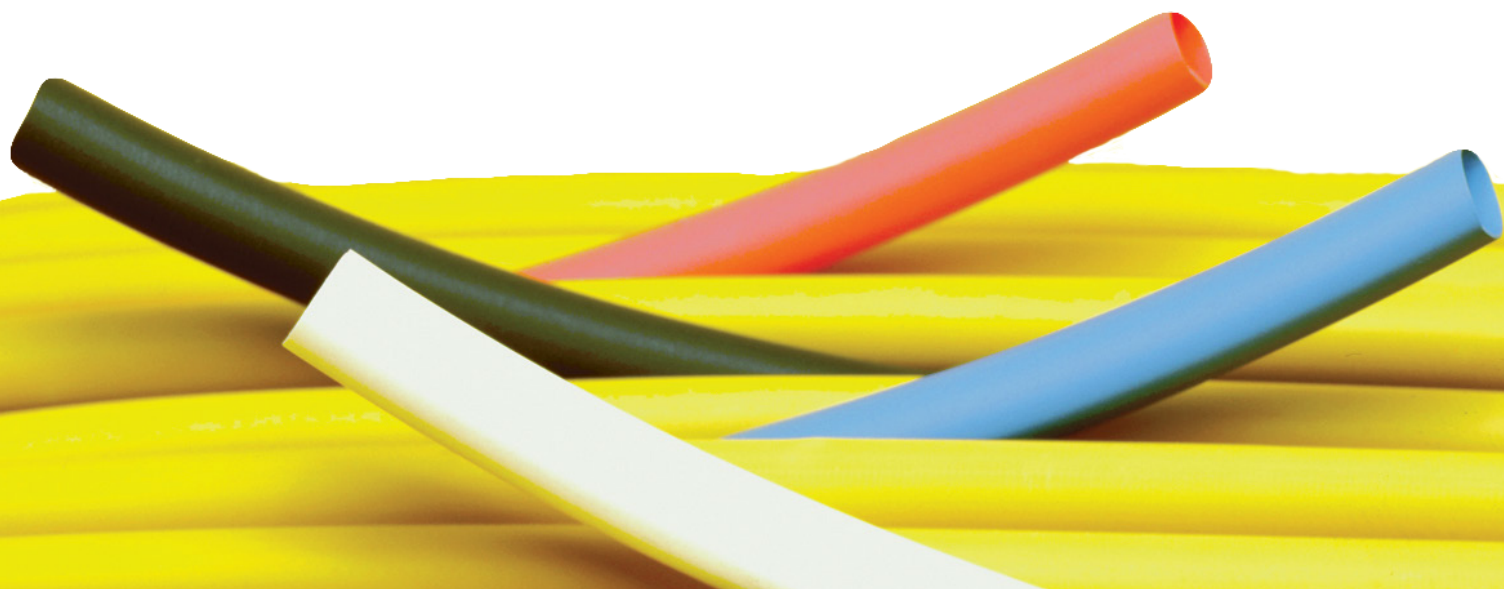
**Material:** Polyolefin

**Operating Temperature:**  $-45^{\circ}\text{C} - 125^{\circ}\text{C}$



Property		Test Method	Standard
Physical	Tensile strength (Mpa)	ASTM D2671	$\geq 10.4$
	Elongation (%)	ASTM D2671	$\geq 200$
	Tensile strength after aging (Mpa)	UL 224 158°C*168hrs	$\geq 7.3$
	Elongation after aging (%)	UL 224 158°C*168hrs	$\geq 100$
Electrical	Dielectric strength(kV/mm)	IEC 243	$\geq 15$
	Volume resistivity ( $\Omega \cdot \text{cm}$ )	IEC 93	$\geq 1 \times 10^{14}$
Adhesive	Water Absorption	ASTM D570	$\leq 0.2\%$
	Softening Point	ASTM C28	$95^{\circ}\text{C}$
	Peel Strength	ASTM D1000	120N/25mm

Cat. No.	Min Inside Diameter As Supplied (mm)	Fully Recovered After Heating (mm)			Application Range (mm)	Length (M)
		Max I.D	Total W.T	Adhesive Thickness		
HSTNWGL3/1	3.2	1.00	0.95	0.40	1.0 - 3.1	1.2
HSTNWGL5/1.6	4.8	1.60	1.10	0.40	1.8 - 4.6	1.2
HSTNWGL6/2.2	6.4	2.20	1.20	0.45	2.4 - 6.4	1.2
HSTNWGL9/3.2	9.5	3.20	1.45	0.50	3.4 - 9.4	1.2
HSTNWGL12/4.2	12.7	4.20	1.70	0.50	4.4 - 12.5	1.2
HSTNWGL19/6	19.1	6.30	2.00	0.60	6.5 - 18.8	1.2
HSTNWGL25/9	25.4	8.50	2.10	0.60	8.8 - 25	1.2
HSTNWGL39/14	39.0	13.50	2.40	0.60	14.0 - 39	1.2
HSTNWGL50/17	50.0	17.00	2.70	0.75	17.5 - 49	1.2
HSTNWGL75/25	75	25.00	3.20	1.05	26 - 72	1.2
HSTNWGL125/42	125	42.00	3.50	1.10	44 - 125	1.2



## Non-slip Repair Heatshrink

- Good abrasion resistant and anti-skid performance
- High flexibility
- Quick installation

**Shrink Temperature:** started at 70°C, full recovery at 110°C

**Tensile Strength:**  $\geq 10.4$  MPa (ASTM D2671)

**Elongation at Break:**  $\geq 200$  % (ASTM D2671)

**Continuous Operating Temperature:** -55°C - +125°C

**Standard colour:** Black, Red, Yellow, Green, Blue



Cat. No.	Min Inside Diameter As Supplied (mm)	Fully Recovered After Heating (mm)		Application Range (mm)	Colour	Length (m)
		Max I.D	Total Wall Thickness			
HSGRIP20/10BK	20	11	0.90	11 - 20	Black	1.0
HSGRIP20/10BL	20	11	0.90	11 - 20	Blue	1.0
HSGRIP20/10GN	20	11	0.90	11 - 20	Green	1.0
HSGRIP20/10RD	20	11	0.90	11 - 20	Red	1.0
HSGRIP20/10YW	20	11	0.90	11 - 20	Yellow	1.0
HSGRIP25/13BK	25	14.5	1.0	14.5 - 25	Black	1.0
HSGRIP25/13BL	25	14.5	1.0	14.5 - 25	Blue	1.0
HSGRIP25/13GN	25	14.5	1.0	14.5 - 25	Green	1.0
HSGRIP25/13RD	25	14.5	1.0	14.5 - 25	Red	1.0
HSGRIP25/13YW	25	14.5	1.0	14.5 - 25	Yellow	1.0
HSGRIP30/15BK	30	17.5	1.2	17.5 - 30	Black	1.0
HSGRIP30/15BL	30	17.5	1.2	17.5 - 30	Blue	1.0
HSGRIP30/15GN	30	17.5	1.2	17.5 - 30	Green	1.0
HSGRIP30/15RD	30	17.5	1.2	17.5 - 30	Red	1.0
HSGRIP30/15YW	30	17.5	1.2	17.5 - 30	Yellow	1.0
HSGRIP35/18BK	35	20	1.2	20 - 35	Black	1.0
HSGRIP35/18BL	35	20	1.2	20 - 35	Blue	1.0
HSGRIP35/18GN	35	20	1.2	20 - 35	Green	1.0
HSGRIP35/18RD	35	20	1.2	20 - 35	Red	1.0
HSGRIP35/18YW	35	20	1.2	20 - 35	Yellow	1.0
HSGRIP40/20BK	40	23	1.2	23 - 40	Black	1.0
HSGRIP40/20BL	40	23	1.2	23 - 40	Blue	1.0
HSGRIP40/20GN	40	23	1.2	23 - 40	Green	1.0
HSGRIP40/20RD	40	23	1.2	23 - 40	Red	1.0
HSGRIP40/20YW	40	23	1.2	23 - 40	Yellow	1.0
HSGRIP50/25BK	50	28	1.25	28 - 50	Black	1.0
HSGRIP50/25BL	50	28	1.25	28 - 50	Blue	1.0
HSGRIP50/25GN	50	28	1.25	28 - 50	Green	1.0
HSGRIP50/25RD	50	28	1.25	28 - 50	Red	1.0
HSGRIP50/25YW	50	28	1.25	28 - 50	Yellow	1.0





# Wattmaster

---

The Wattmaster range of tools has been synonymous as a trusted name in the electrical industry since the late 1960's. Well known for quality products and extensive industry knowledge, Wattmaster has been the brand that Australian electricians continue to rely upon. The range consists of many well known brands of hand tools & storage systems including, Marvel pliers, Witte screwdrivers and Rola case.



## Pliers & Side Cutters

### Heavy Duty Linesmans Pliers

- 225mm combination pliers
- Special shaped cutter for TPS cable
- Soft comfort handle grips
- Heavy duty non-slip handles
- Tested to 1000V ratings
- Multi-fit nut holder
- Cross thatched pliers
- Precision machined and hardened cutting jaws
- Made from drop forged and heat treated steel



**CRIMPER**

Crimps non-insulated terminals up to 10mm<sup>2</sup>



**CUTTER**

Copper up to 16mm<sup>2</sup> & SWA strands to 2mm Ø



**MULTI FIT NUT HOLDER**



WATMA880TPS

Cat. No.	Cutting capacity copper wire	Cutting capacity SWA Strands	Cutting capacity 2C+E flat cable	Crimping capacity non-insulated terminals	Handle Color	Steel Material	Overall Length
WATMA880TPS	16mm <sup>2</sup>	2mm Ø	1.5 - 2.5 mm <sup>2</sup>	up to 10mm <sup>2</sup>	Orange	CR-MO	225 mm

## Cable Cutters

### Ratchet Cable Cutter

- Ratchet operation for easy cutting
- Cuts armoured cables up to 65mm Ø with max 2.5mm soft armour wire.
- Cuts up to 100mm telephone cable
- Cuts up to 100mm<sup>2</sup> copper



Cat. No.	Length	Weight
WATRC1050L	680 mm	3.8 kg

## Specialty Hand Crimpers

### Guided Solar Connector Crimper

- Crimper for solar PV single core connector
- With regulating and locating housing
- Ergonomically designed handles
- Made from drop forged carbon steel
- Lightweight and easy to operate
- Ratchet controlled for consistent results

**BACK OF HEAD**



WATSC-MC2/6-G

Cat. No.	Crimping capacity	Overall Length	Weight
WATSC-MC2/6-G		200 mm	0.380 kg

## UPDATED PRODUCT

General Electricians Tools

Hollow Wall Anchor Setting Tool

- Setting hollow wall anchors quickly & accurately
- Suitable for M4-M6 hollow wall anchors
- Compact pistol grip type handles
- Plastic coated handles for grip and comfort
- Easy to use

Cat. No.	Tool material	Size
WATWAG-C		162 mm (W) x 160 mm (H) x 32 mm (D)



WATWAG-C





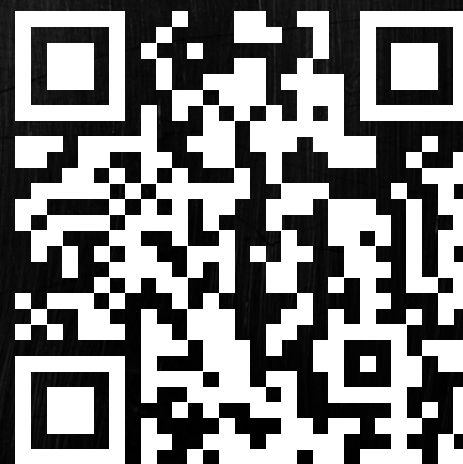
**52 WEEKS OF**

**Alco**  
Used by sparkys everyday

# **ELECTRIC** **INFLUENCER**



**SCAN THE BARCODE  
TO WATCH THE  
LATEST EPISODE.**





# TRADES CLUB

## Join the Trades Club

at [www.kleintools.com.au](http://www.kleintools.com.au) for new products,  
innovations and chances to win FREE tools!

- ELECTRICAL
- DATA COM
- HVAC
- TELECOM
- UTILITY
- PLUMBING
- HEAVY INDUSTRY
- STEEL & CONCRETE CONSTRUCTION

**KLEIN<sup>®</sup>  
TOOLS**  
AUSTRALIA



See our complete range of products at  
[www.kleintools.com.au](http://www.kleintools.com.au)

